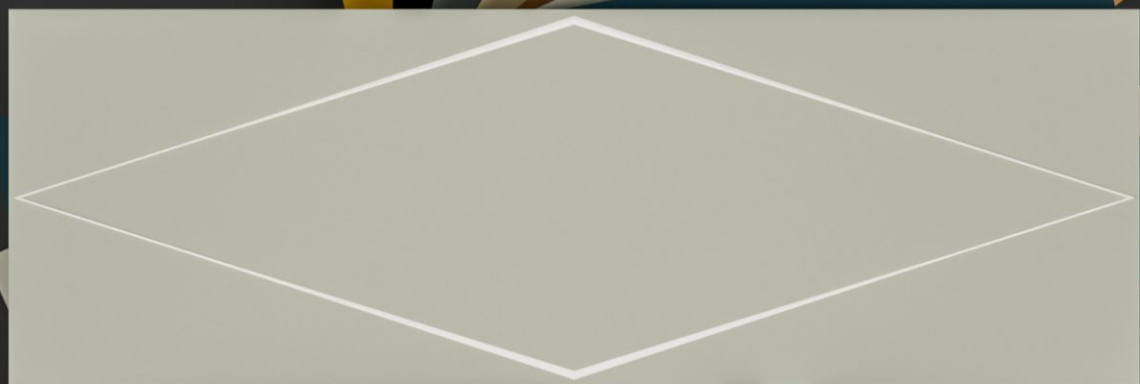




A Century of Style

The **Classic Choice** for  
**Modern Living**



**BANK**  
— COLLECTION —

**100X**  
**300MM**

SUBWAY TILES



**100X300MM**

10.5 MM Thickness



**BANK**  
COLLECTION

**CLASSIC SUBWAY,  
MODERN VIBES**  
TIMELESS ELEGANCE



## about **Le-Mina surfaces**

Lemina surfaces is the first mosaic and subway tiles manufacturing company based in morbi, india. In to day's highly competitive market, Lemina has carved a niche by making the smallest tile humanly possible. Lemina, with its constant innovation Lemina has become the epitome of creative designs and shapes in the world of small tiles. With its unique ideas, Lemina is leading the pack when it comes to manufacturing of mosaic and subway tiles.

**SIMPLICITY  
THAT STANDS OUT.**  
TIMELESS ELEGANCE



100X300MM | 10.5MM Thickness



## Features & Advantages



Chemical  
Resistance



Heat & Fire  
Resistance



Abrasion  
Resistance



High Tensile  
Strength



Less Water  
Absorption



Environment  
Friendly

Subway tiles are a popular choice for kitchen backsplashes, bathroom walls, and shower surrounds. This larger size can create a different aesthetic compared to the standard subway tile. It might be used in spaces where you want a more modern or bold look, as the larger dimensions can make a space feel more expansive and contemporary. These larger subway tiles can also reduce the number of grout lines, which some people prefer for easier cleaning and a sleeker appearance.



**BANK**  
— COLLECTION —

Product Name :

# MIDNIGHT

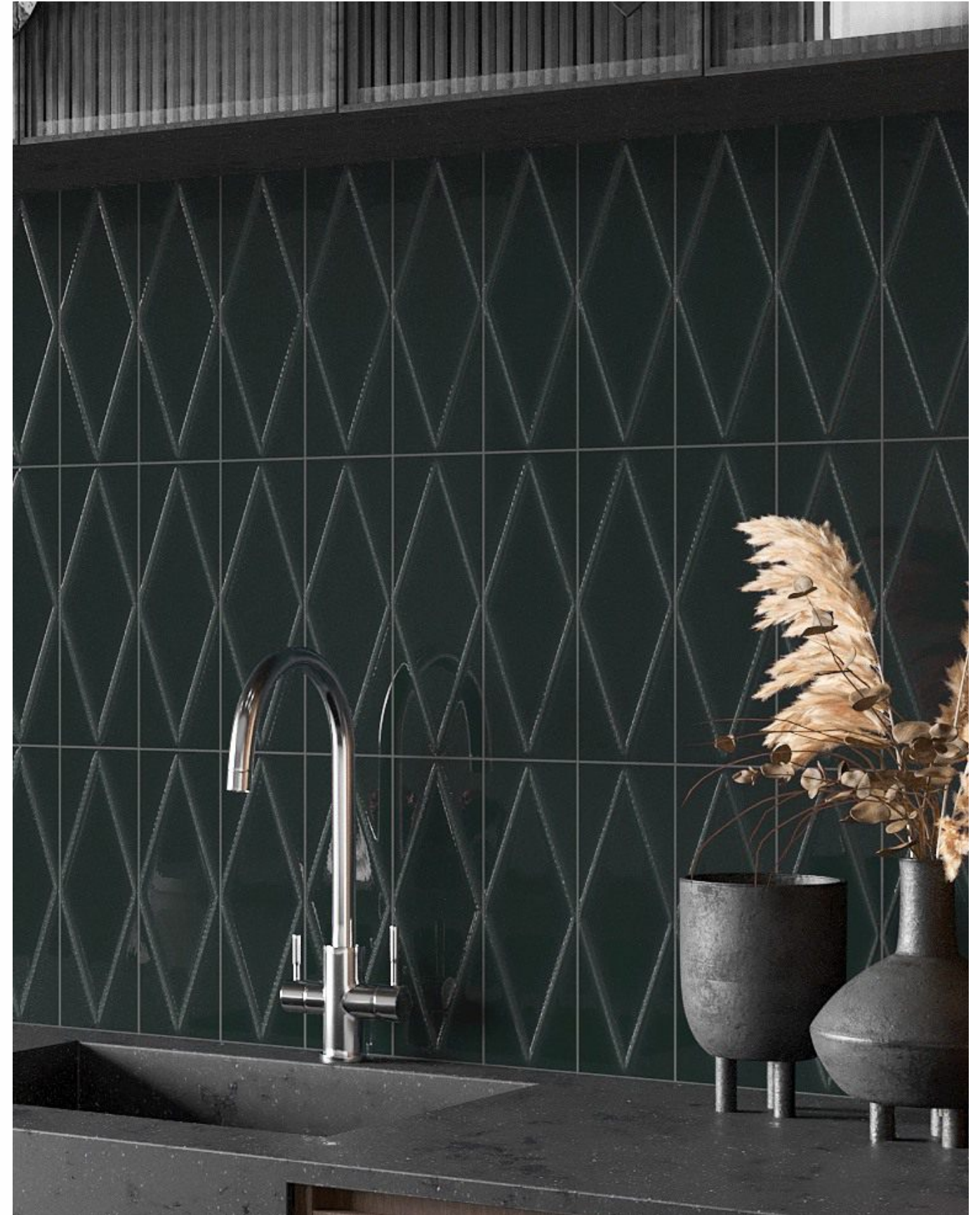


**100X  
300MM**

Finish  
**GLOSSY**

Thickness  
**10.5 MM**

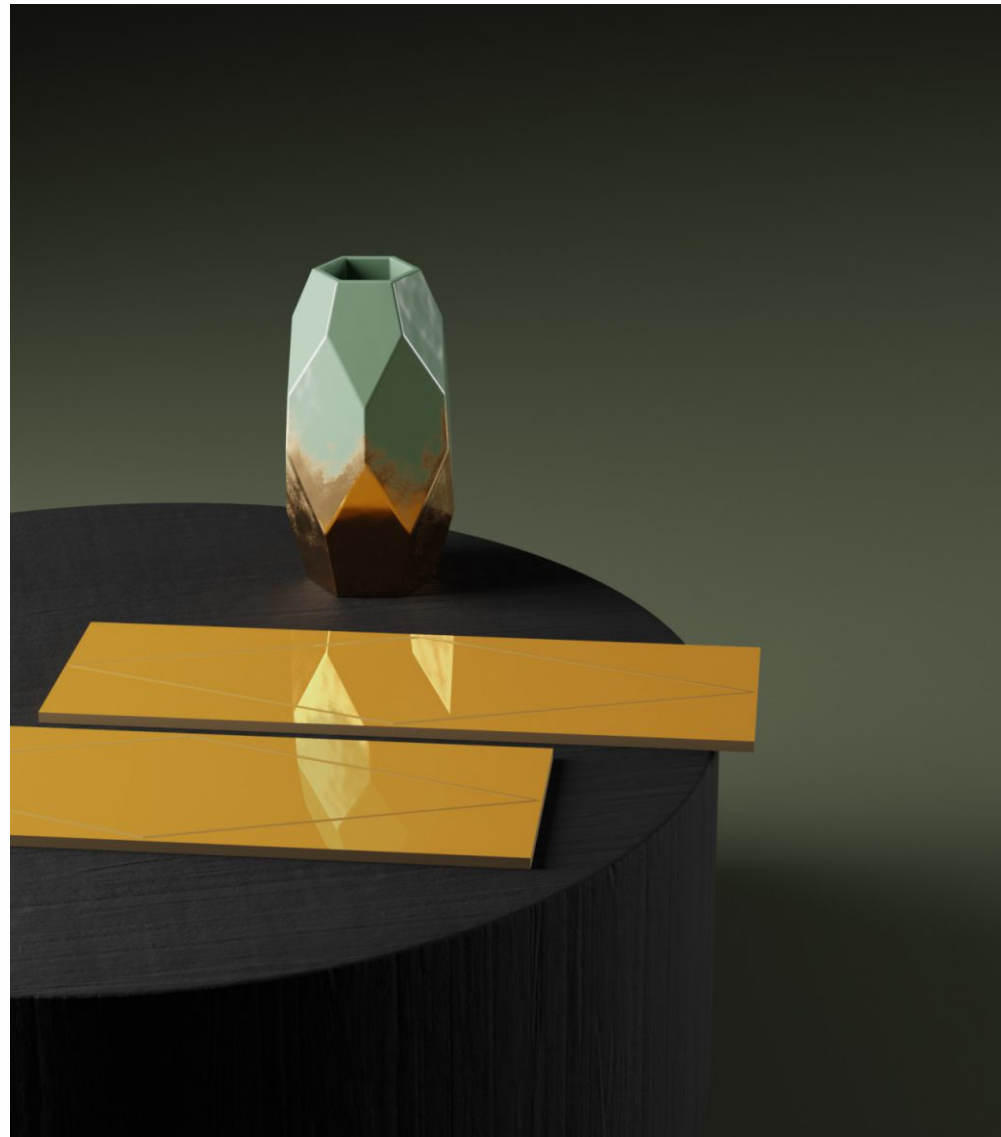
100X300MM | 10.5MM





Product Name :

**GOLD**



**100X  
300MM**

Finish  
**GLOSSY**

Thickness  
**10.5 MM**

100X300MM | 10.5MM





Product Name :

# LILAC

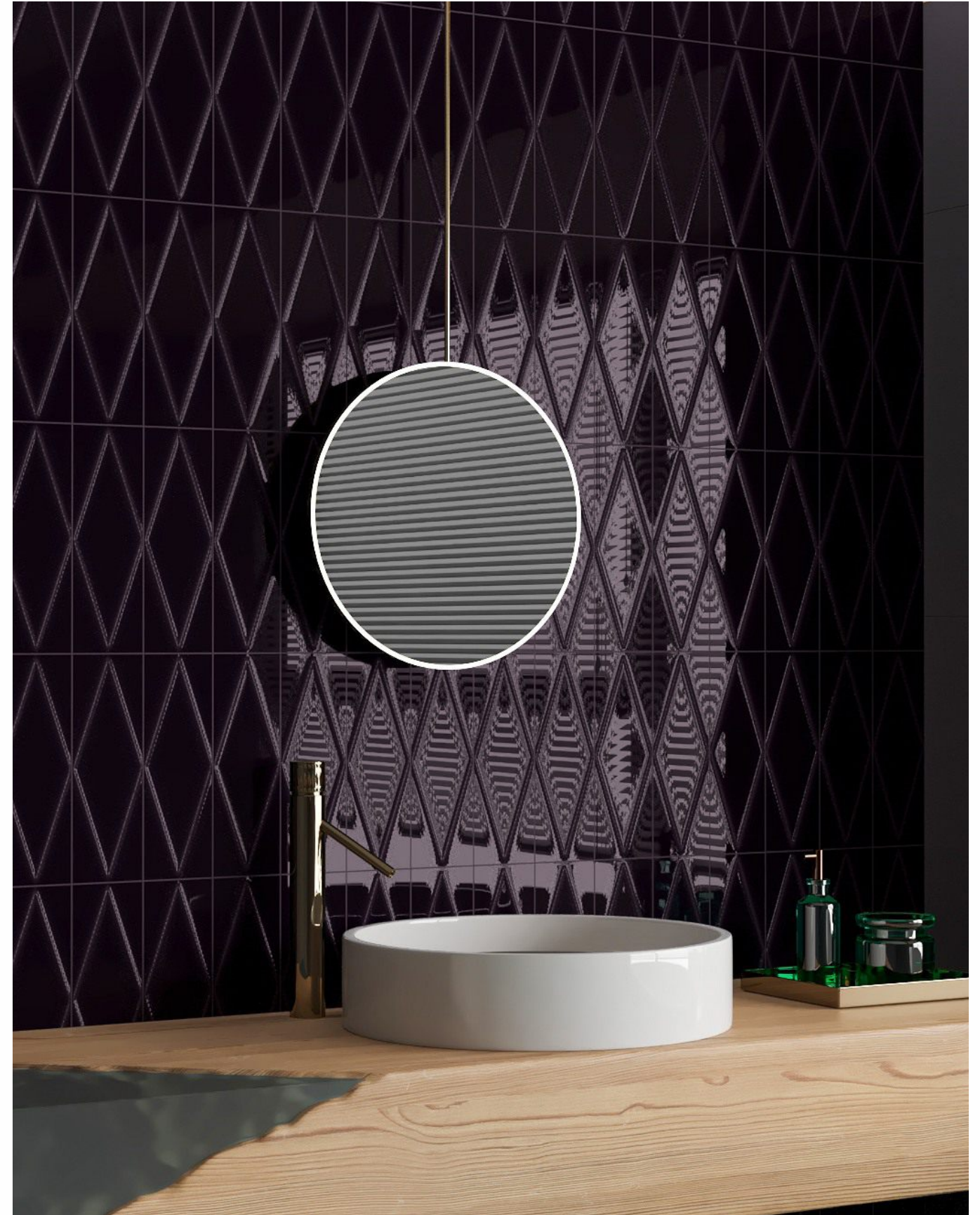


**100X  
300MM**

Finish  
**GLOSSY**

Thickness  
**10.5 MM**

100X300MM | 10.5MM





ELEGANT STONE  
SURFACE LLP

Product Name :

# SMOKE GREY



**100X  
300MM**

Finish  
**GLOSSY**

Thickness  
**10.5 MM**

---

---

---

---

100X300MM | 10.5MM





ES

ELEGANT STONE  
SURFACE LLP

Product Name :

# STORM



**100X  
300MM**

Finish  
**GLOSSY**

Thickness  
**10.5 MM**

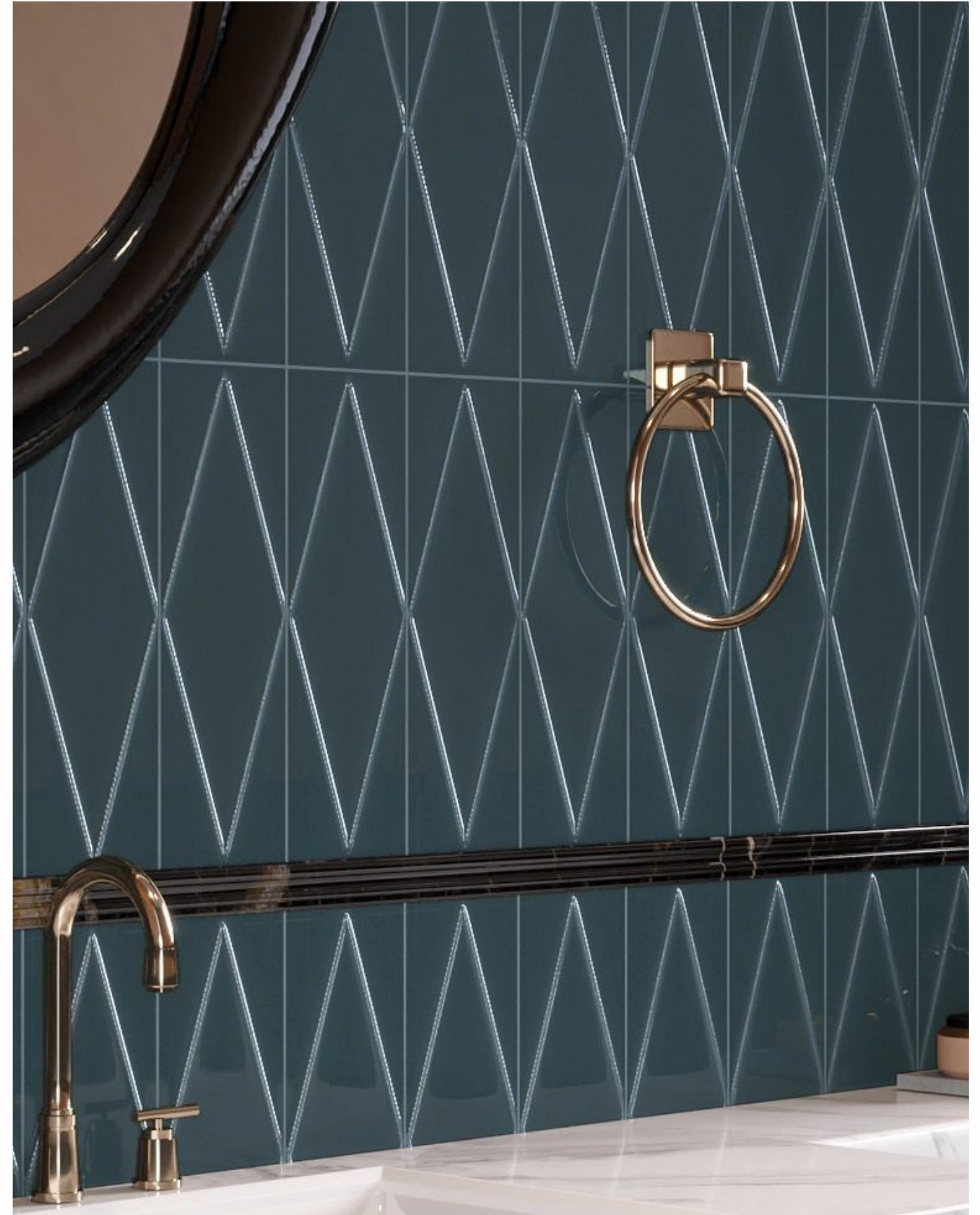
---

---

---

---

100X300MM | 10.5MM





**ES**  
ELEGANT STONE  
SURFACE LLP

Product Name :

# EARTH

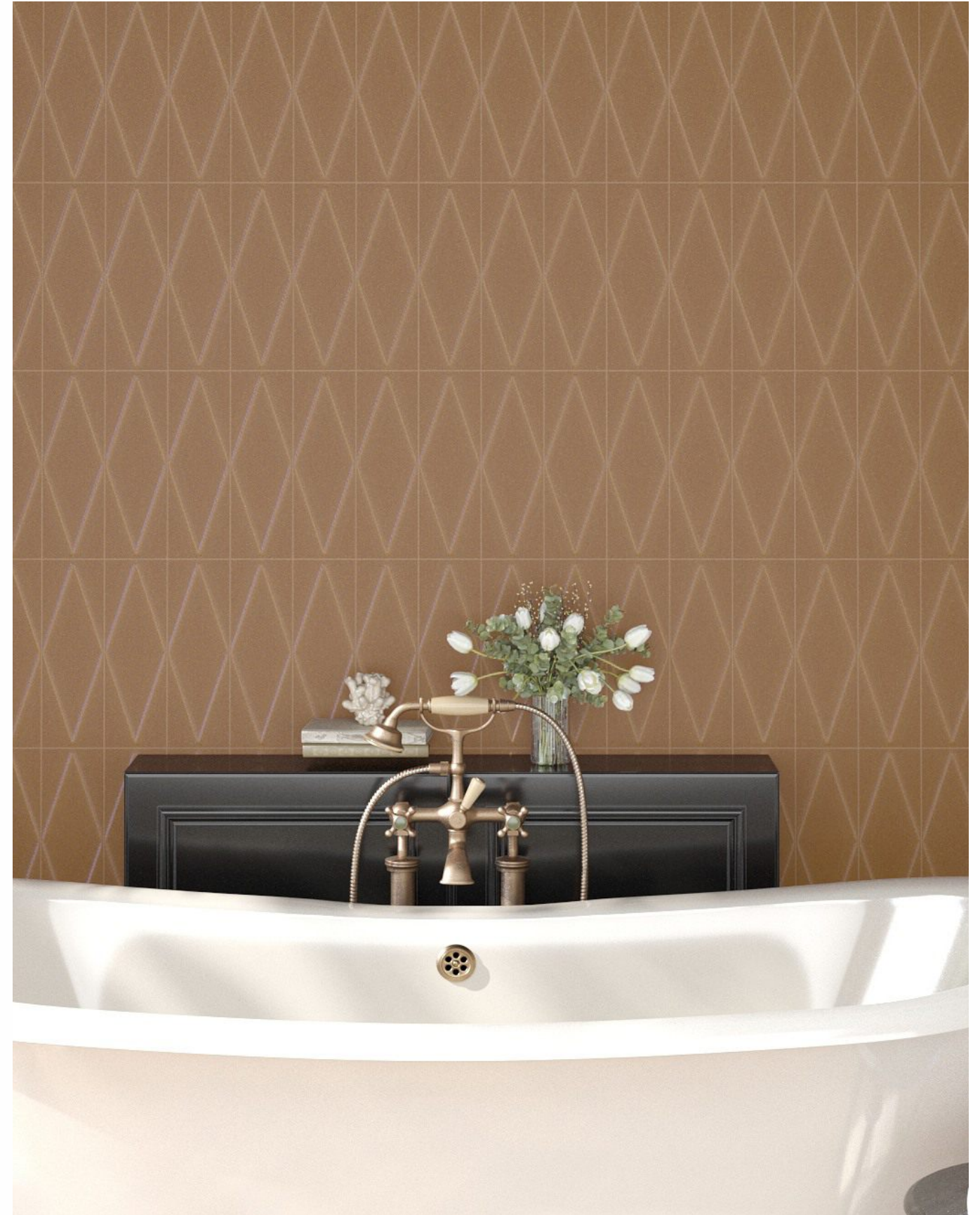


**100X  
300MM**

Finish  
**MATT**

Thickness  
**10.5 MM**

100X300MM | 10.5MM

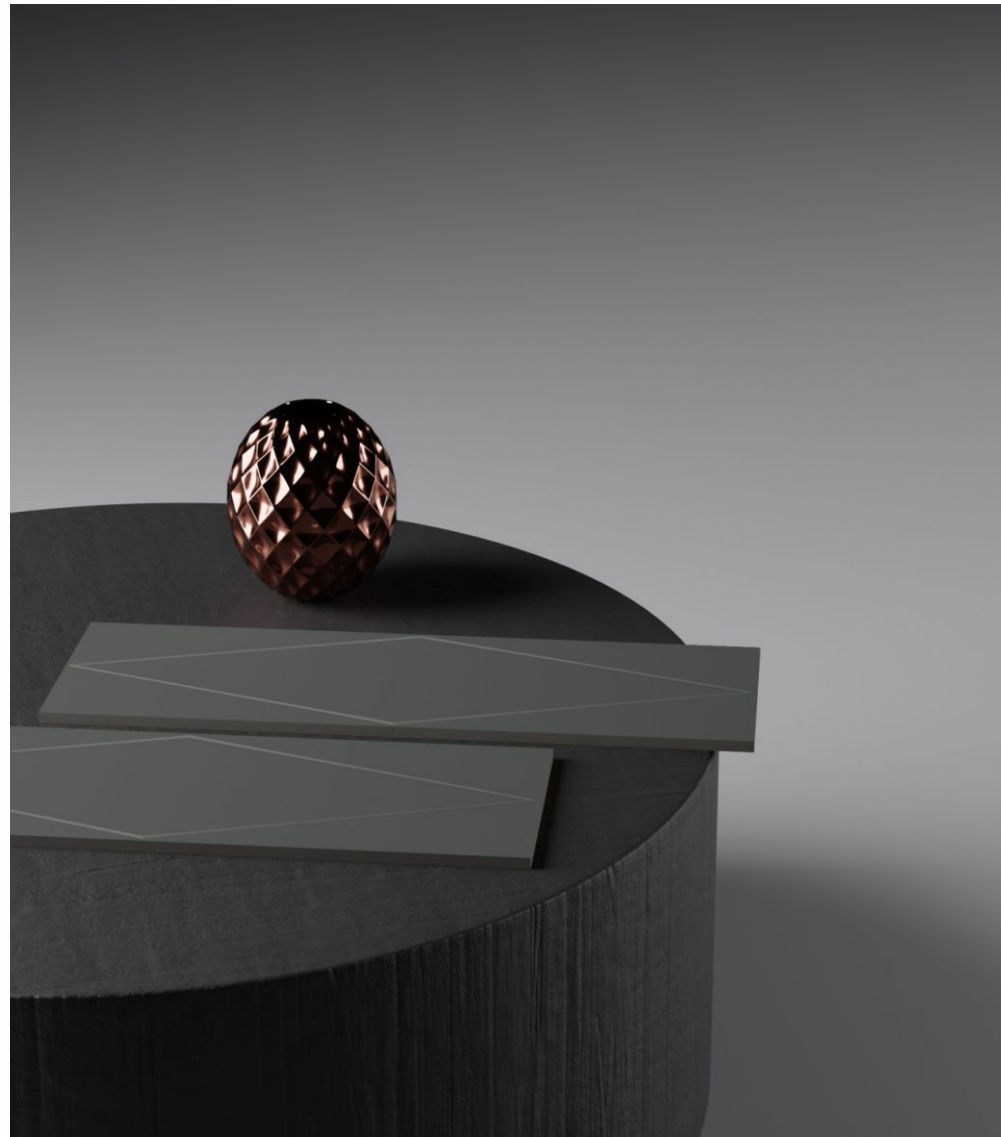




**ES**  
**ELEGANT STONE**  
SURFACE LLP

Product Name :

# MAGNET



**100X  
300MM**

Finish  
**MATT**

Thickness  
**10.5 MM**

100X300MM | 10.5MM





Product Name :

# MAIZE



**100X  
300MM**

Finish  
**MATT**

Thickness  
**10.5 MM**

100X300MM | 10.5MM





Product Name :

# SALT



**100X  
300MM**

Finish  
**MATT**

Thickness  
**10.5 MM**

100X300MM | 10.5MM





ES

ELEGANT STONE  
SURFACE LLP



**ELEGANT STONE**  
**SURFACE LLP**

---